

Nabu FDC Assembly notes.

Rev 0 #000-010 these boards are all fully assembled and tested.

#1 missed trace to +5 - not needed as resistors are not installed.

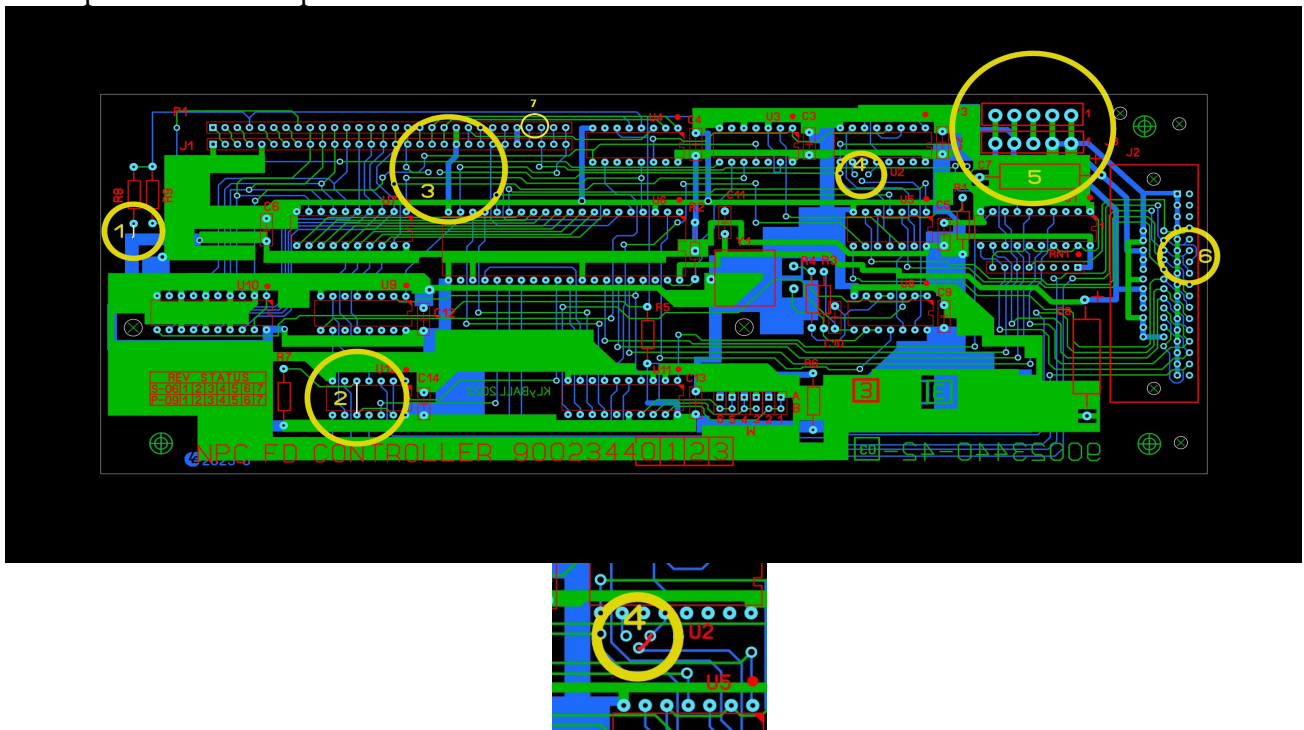
#2 missing trace from pull-up, important

#3 jumper wire to GND could add trace in final revision

#4 added via to use instead of jumper wire small jumper needed

#5 drilling to small for molex connector used a awl to ream out to preserve the plate though

#6 some drives that cannot be strapped to motor on from drive select need to jumper the 34 pin idc pin 10 to 14 and pin 12 to 16 drive A is before the twist



Rev 1 #011-032

#4 added via to use instead of jumper wire small jumper needed

#6 some drives that cannot be strapped to motor on from drive select need to jumper the 34 pin idc pin 10 to 14 and pin 12 to 16 drive A is after the twist

note: some 30 pin headers and some idc connectors are a tight fit in there holes but do fit.

Rev 2 #033+

#6 Drive A is after the twist, some drives might not like the motor on and drive select tied, so could be cut 10-14 and or 12 to 16

ALL REVISIONS

#7 Add 2.2k resistor between pin 3 and 4 of 30pin header bottom of board.